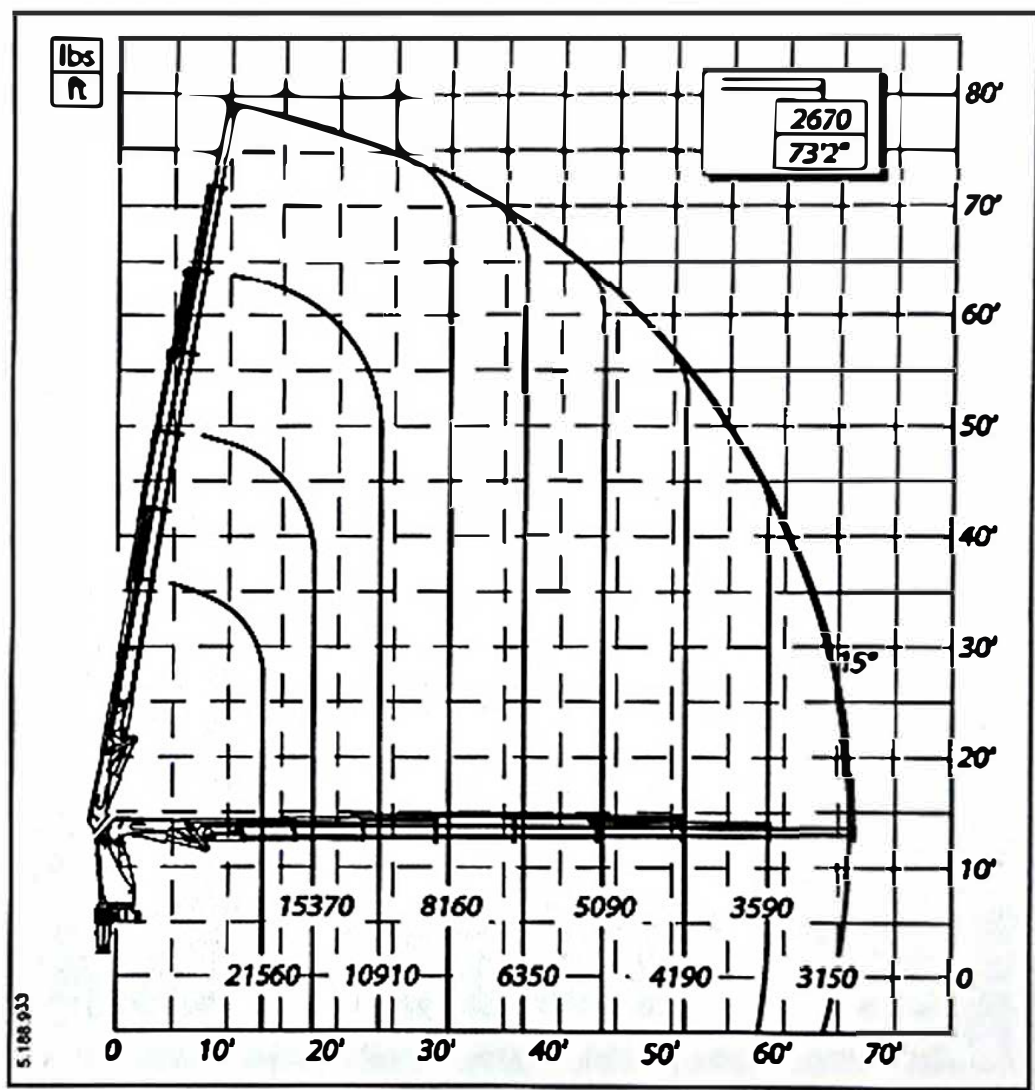
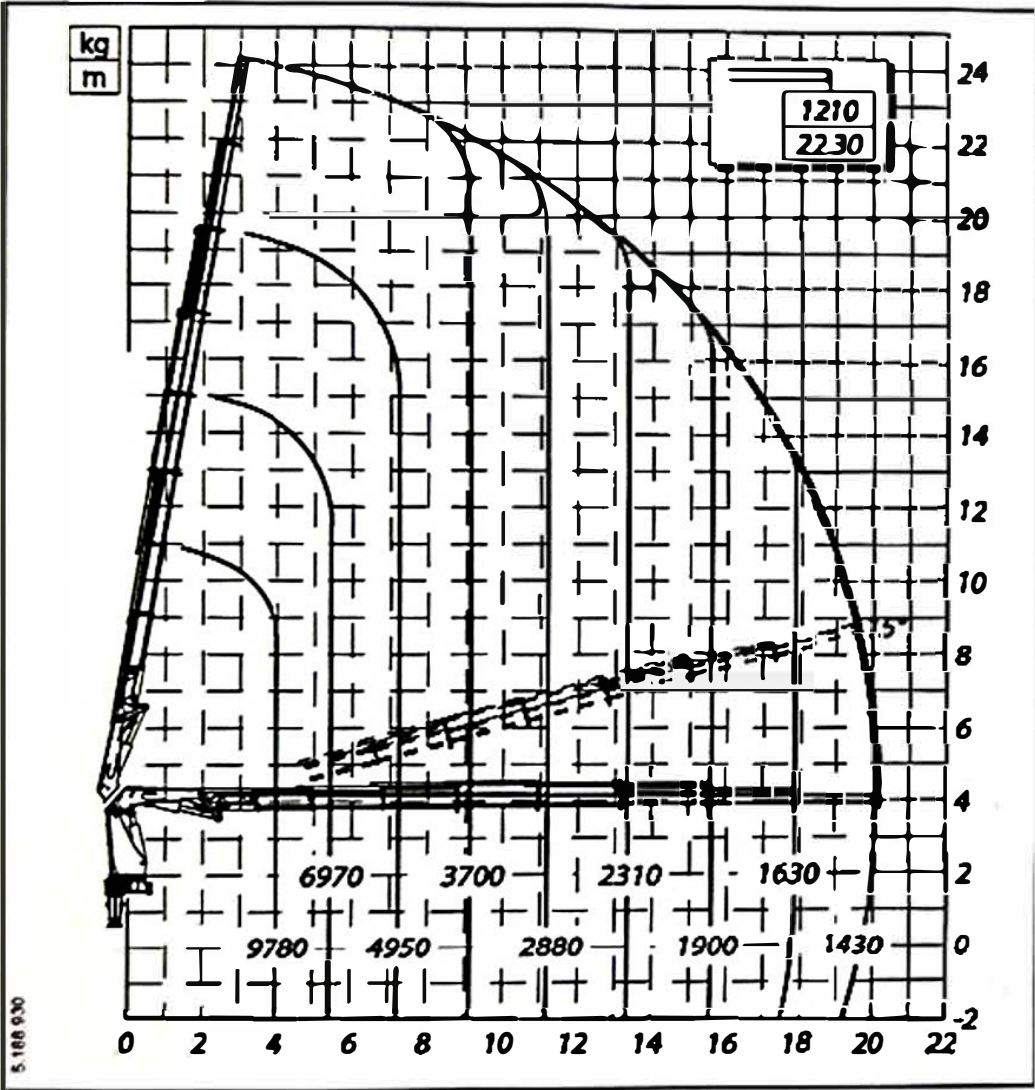


# - Capacities diagram

## PM 48528 SP C



\*\* Maximum capacity at mobile hook  
 \*\*\* Maximum capacity from horizontal to vertical  
 Note: the performances stated are obtained with the main arm inclined to 20°

\*\* Maximum capacity at mobile hook  
 \*\*\* Maximum capacity from horizontal to vertical  
 Note: the performances stated are obtained with the main arm inclined to 20°